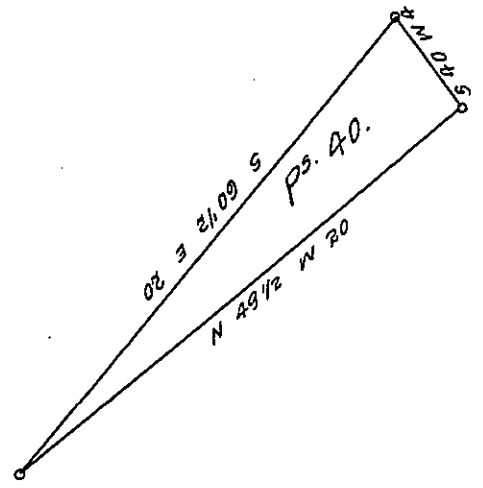


York County Shore.



Lancaster County Shore

A Draught of Grass Island situate in the River Susquehanna in Drumore township Lancaster County West of Hares Island and South east of Big chestnut Island opposite land of _____ Smith on the east and Jacob Balmer on the west containing forty perches Strict measure surveyed in pursuance of a warrant dated the 26th day of Sept A. D. 1818 granted to Robt. Lindsay.

Pr. Jacob Hibshman. D.S.

To Jacob Spangler Esqr.
Surveyor General.

IN TESTIMONY that the above is a copy of the original remaining on file in the Department of Internal Affairs of Pennsylvania, made conformably to an Act of Assembly approved the 16th day of February 1833, I have hereunto set my hand and caused the Seal of said Department to be affixed at Harrisburg, this third day of January 1908

Henry Howell
Secretary of Internal Affairs.